

Figura 22 - Nitrati (mg/l) media anno 2003.

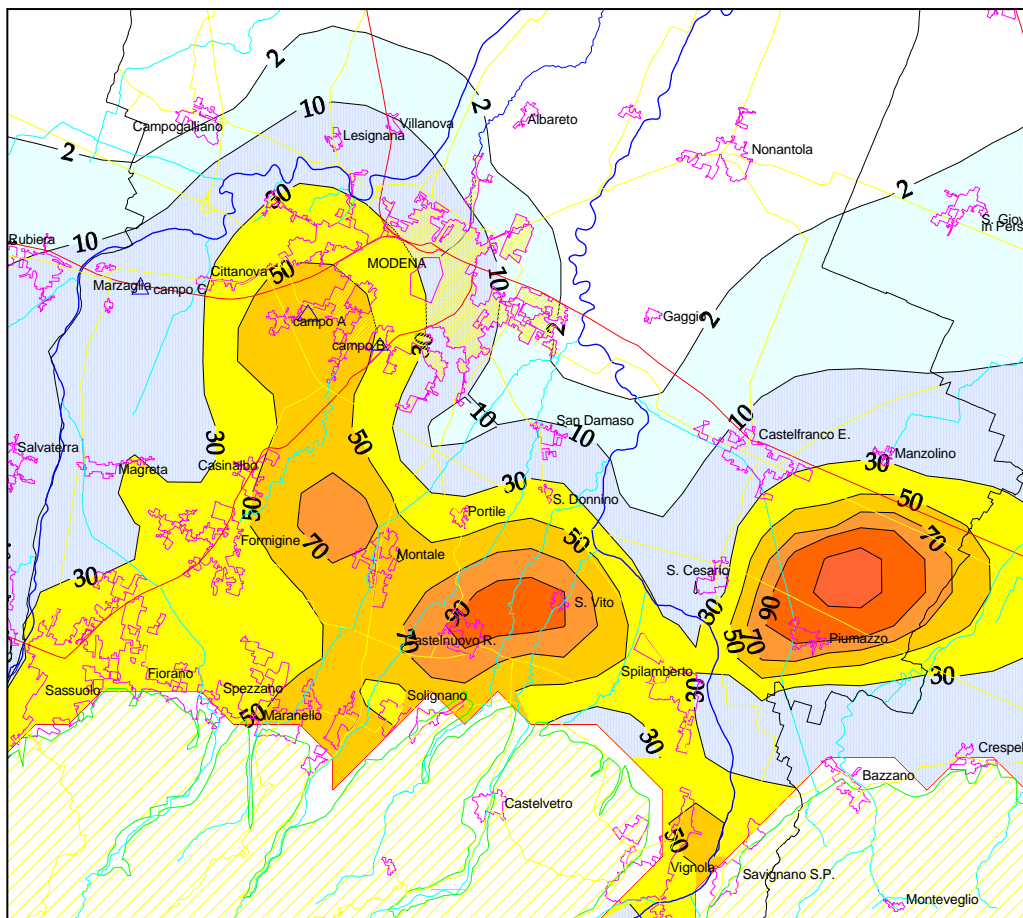


Figura 23 - Nitrati (mg/l) media anno 2004.

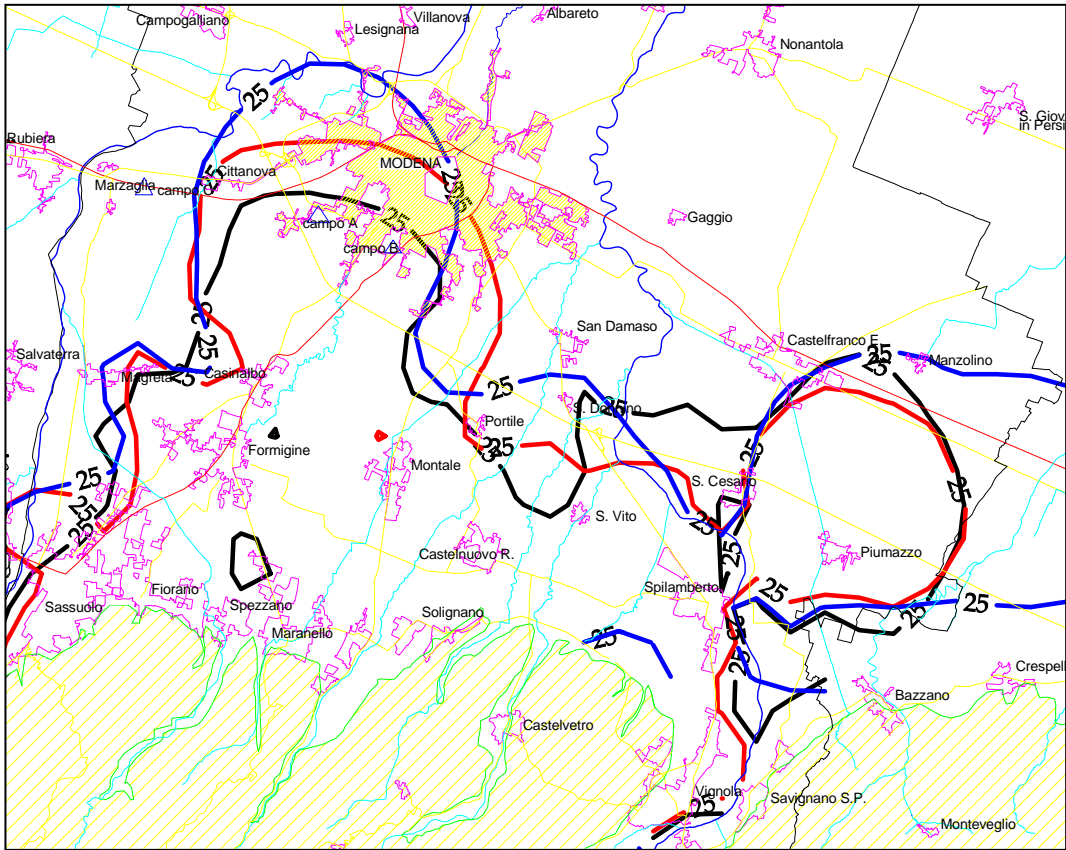


Figura 24 - Nitrati (mg/l) confronto medie anni 1994, 2002 e 2004 - isocone dei 25 mg/l.

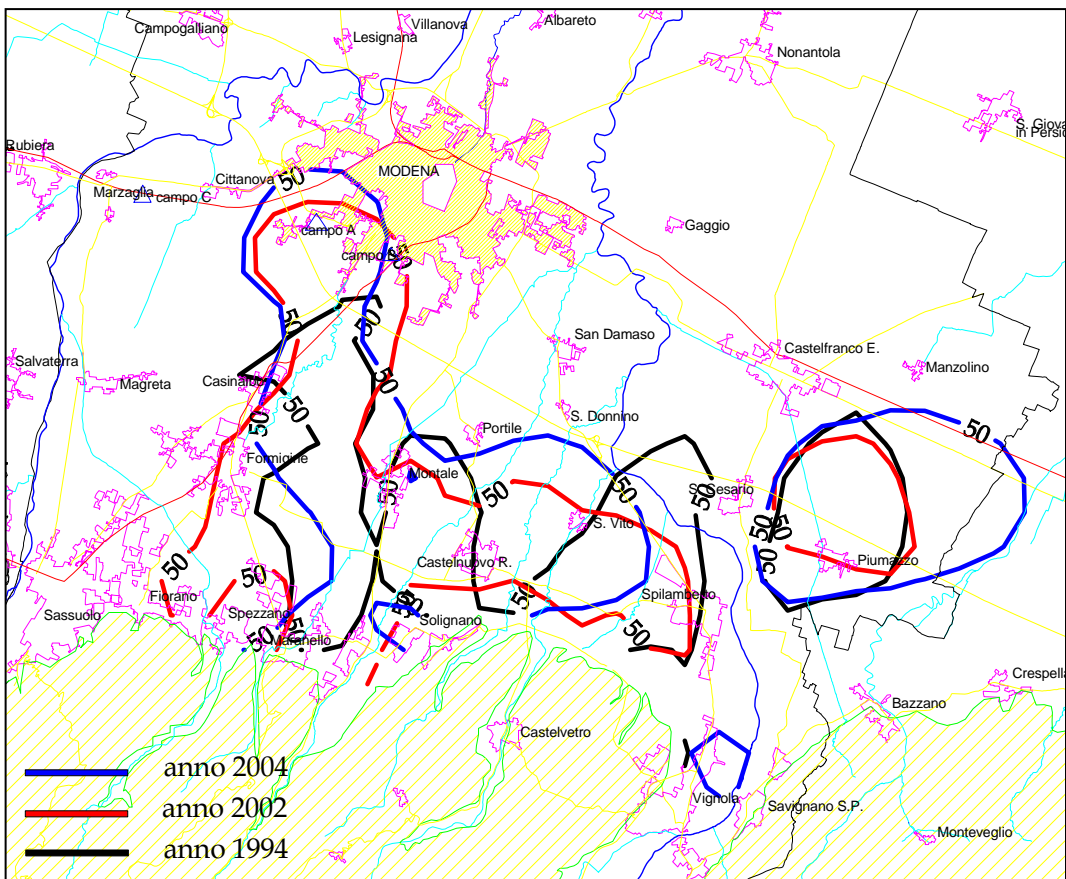


Figura 25 - Nitrati (mg/l) confronto medie anni 1994, 2002 e 2004 - isocone dei 50 mg/l.

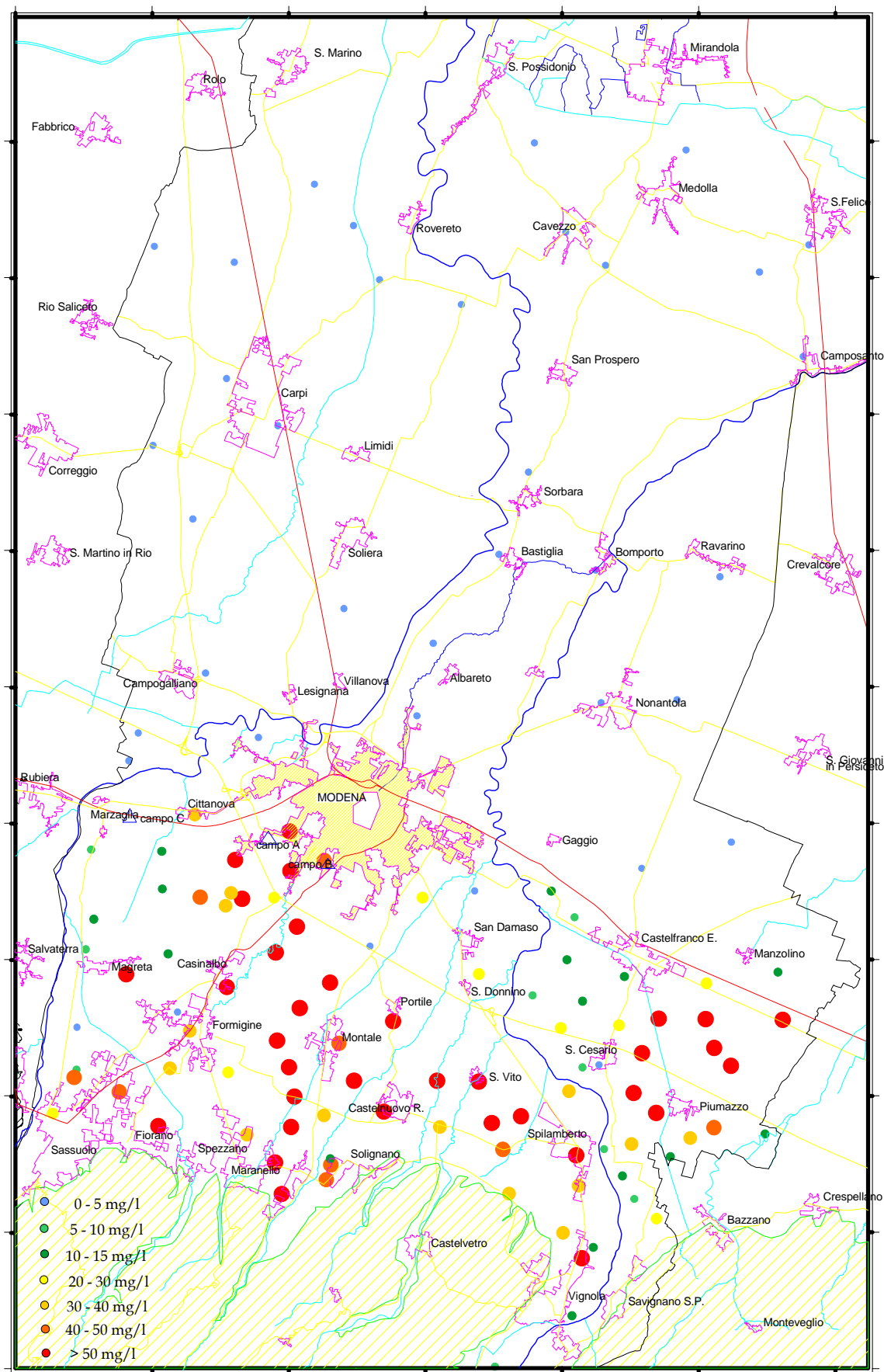


Figura 26 - Concentrazione dei nitrati per singolo pozzo media anno 2003.

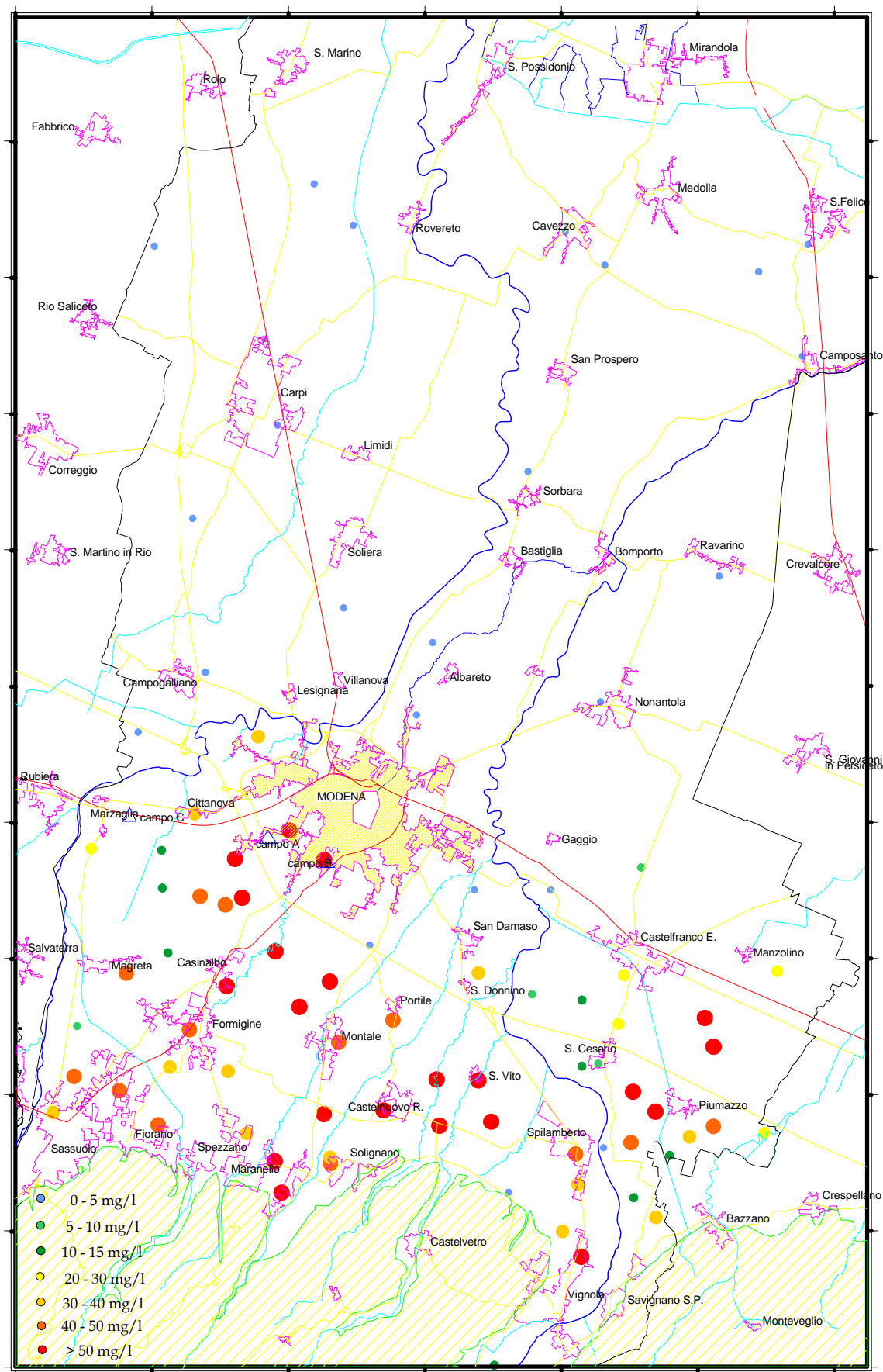


Figura 27 - Concentrazione dei nitrati per singolo pozzo media anno 2004.

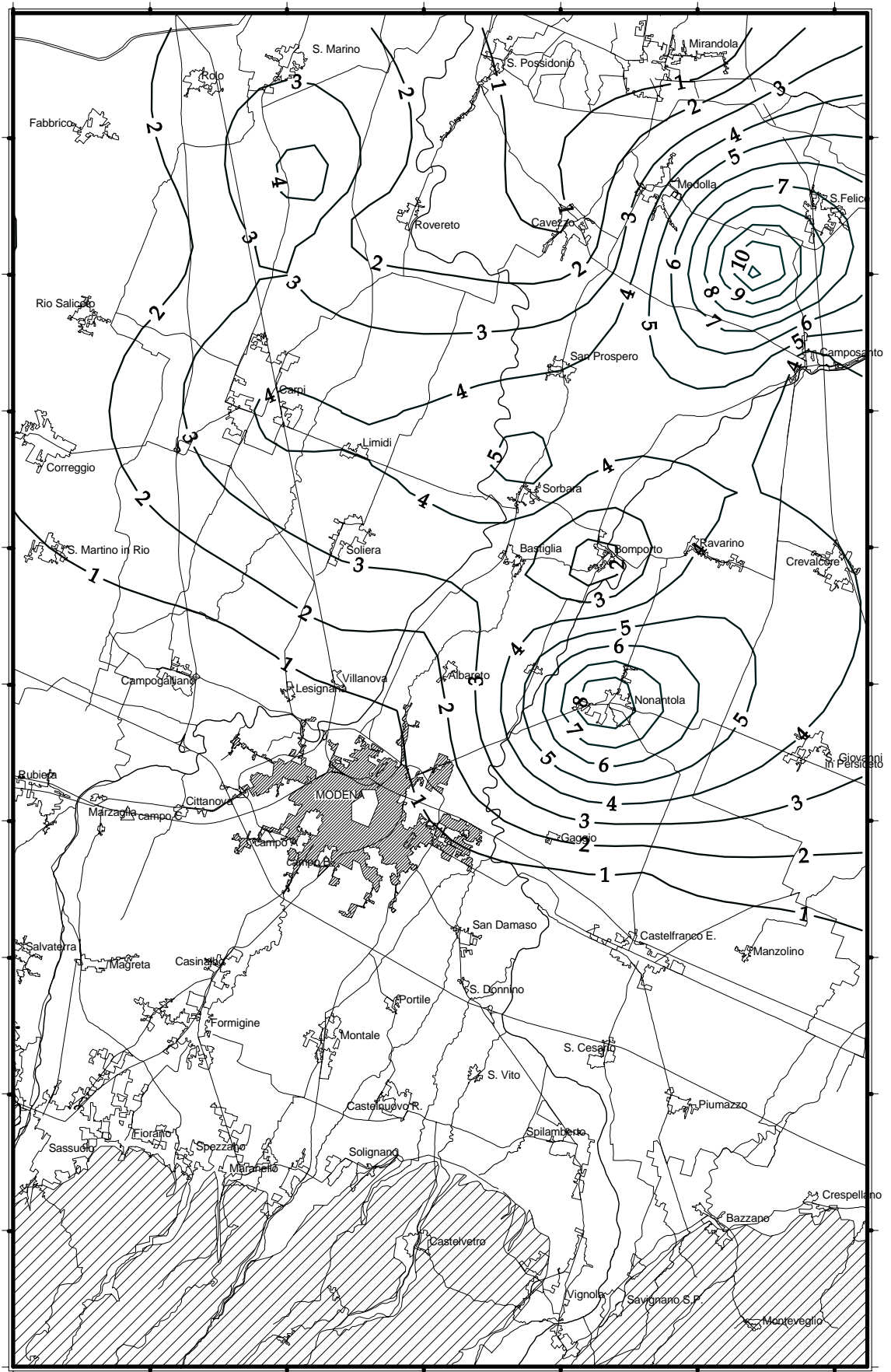


Figura 28 - Ammoniaca (mg/l) media anno 2004.