



# PROVINCIA DI MODENA



## AREA LAVORI PUBBLICI

Via Giardini, n° 470  
41124 - MODENA



A cura di:



F.I.A. Futura Industria Ambientale s.n.c.  
Via Lelio Rossi, 33 - 41012 - Carpi (MO)  
Tel/Fax: 059/689551 - [www.studiofia.it](http://www.studiofia.it)  
email: [info@studiofia.it](mailto:info@studiofia.it)  
pec: [studiofia@dapec.it](mailto:studiofia@dapec.it)

Oggetto:

PIANO D'AZIONE RELATIVO AGLI ASSI STRADALI PRINCIPALI  
DI COMPETENZA PROVINCIALE (art. 4 D. Lgs. 194/05)

## PIANO D'AZIONE

Nome infrastruttura: SP569 di Vignola

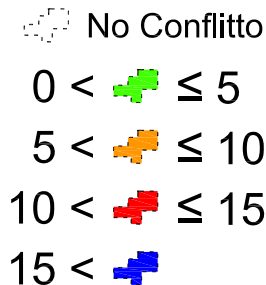
Codice identificativo: IT\_a\_rd0053008

Coordinate - Start: X=11,0104 Y=44,4754; End: X=11,0138 Y=44,4660.

Progetto: AN403	Revisione: 1.0	Data: Giugno 2013	Arco Stradale: <b>SP569</b>
Scala: 1:10.000	Codice ditta: 2AD11pro	Disegnatore: MR	Versione: 1.0
Note:			

# LEGENDE

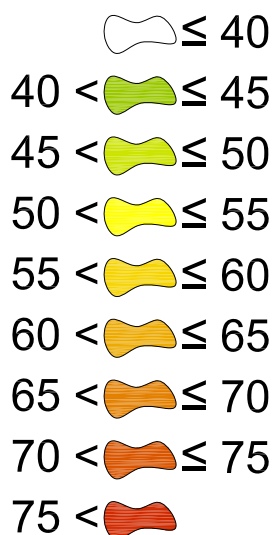
## Conflitto in facciata edifici - dB(A)



## Sigle

<b>MA</b>	= Mappatura acustica
<b>PA</b>	= Piano d'azione
<b>L<sub>den</sub></b>	= Livello giorno-sera-notte, 24 ore
<b>L<sub>n</sub></b>	= Livello notte, 22:00 - 06:00
<b>LA<sub>eq,day</sub></b>	= Livello equivalente giorno, 06:00 - 22:00
<b>LA<sub>eq,night</sub></b>	= Livello equivalente notte, 22:00 - 06:00
<b>ECU<sub>den</sub></b>	= Indice criticità acustico

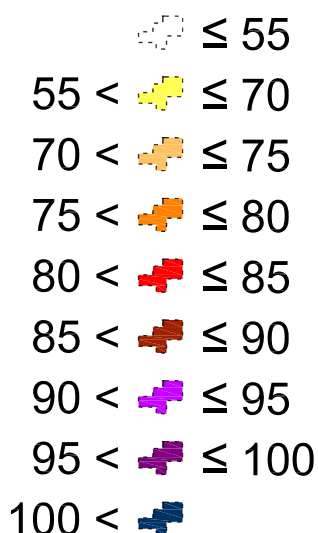
## Mappe isolivello - dB(A)



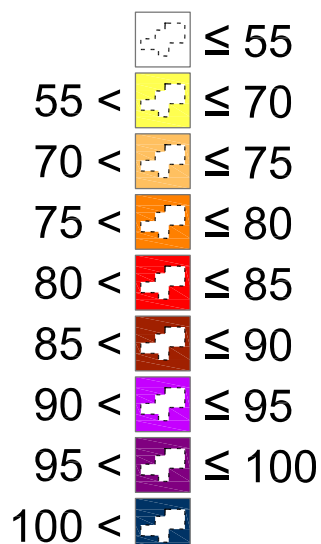
## Infrastrutture/edifici:



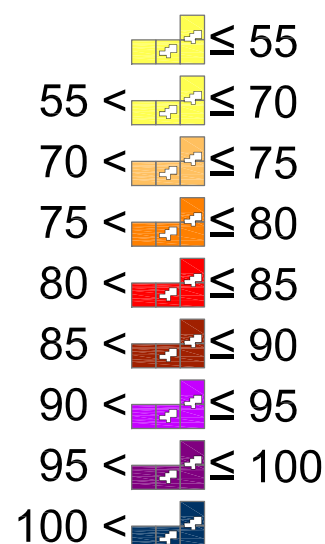
## ECU<sub>den</sub> di Edificio



## ECU<sub>den</sub> di Area



## ECU<sub>den</sub> di Sito



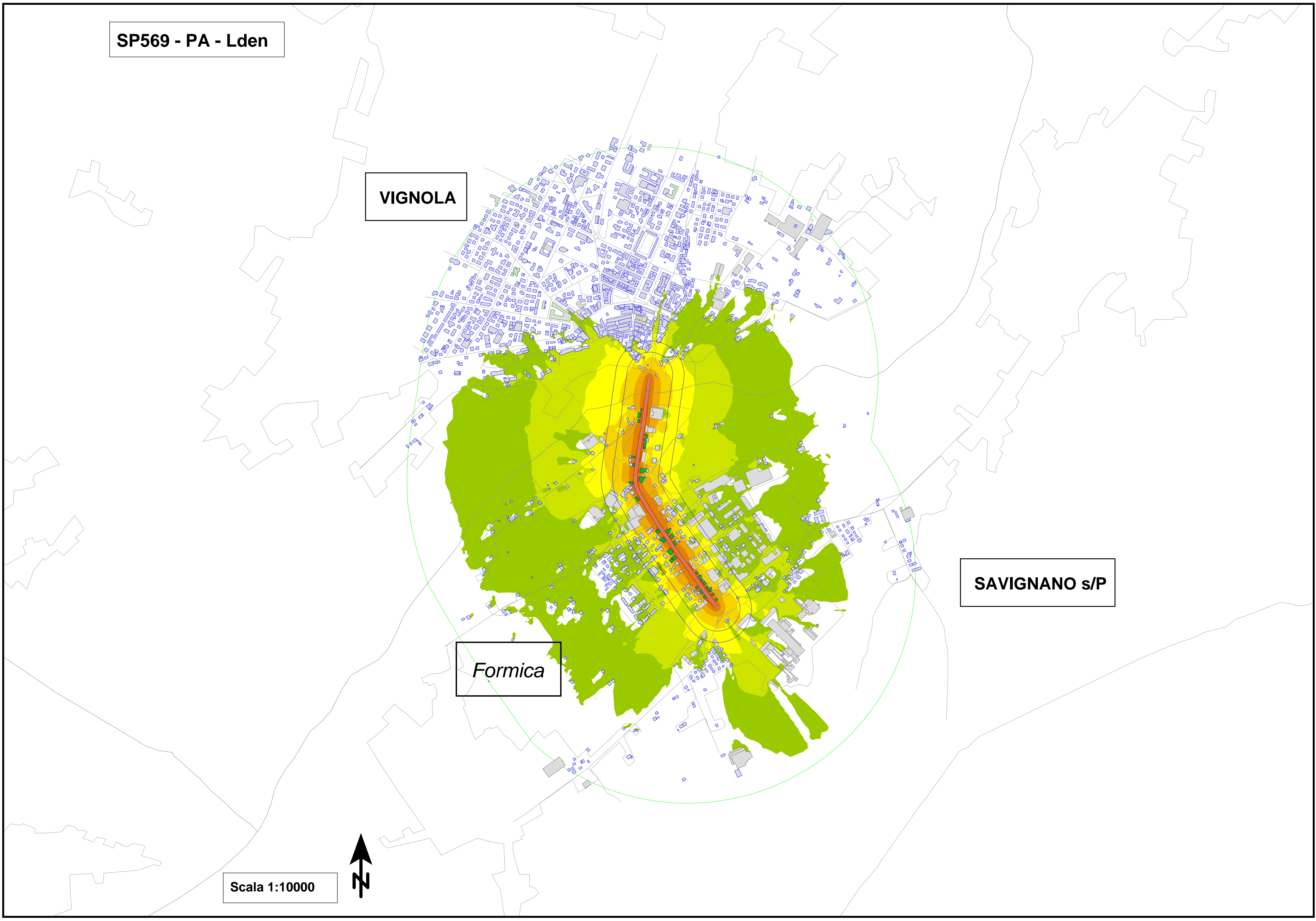
SP569 - PA - Lden

VIGNOLA

SAVIGNANO s/P

Formica

Scala 1:10000





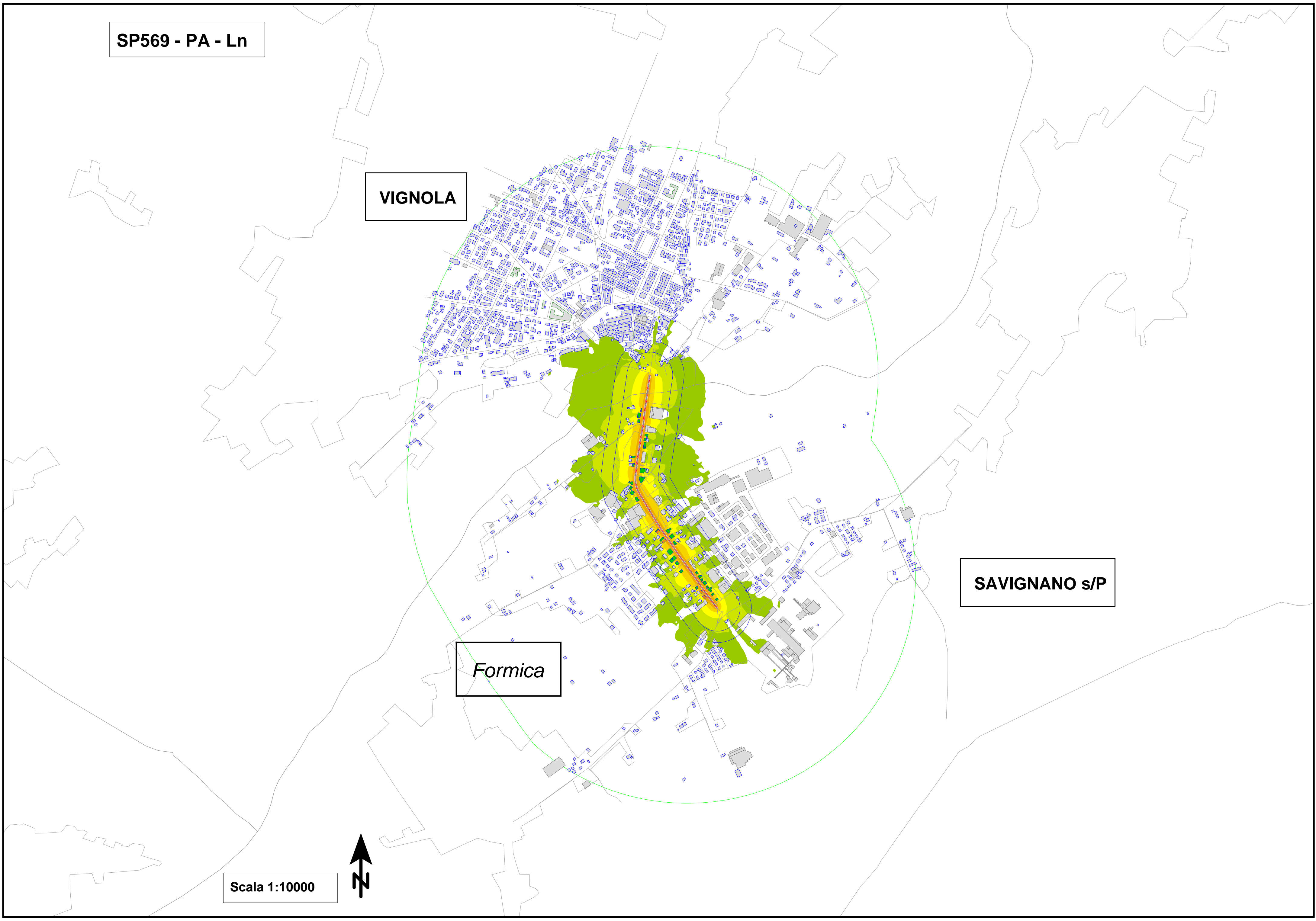
SP569 - PA - Ln

VIGNOLA

SAVIGNANO s/P

*Formica*

Scala 1:10000



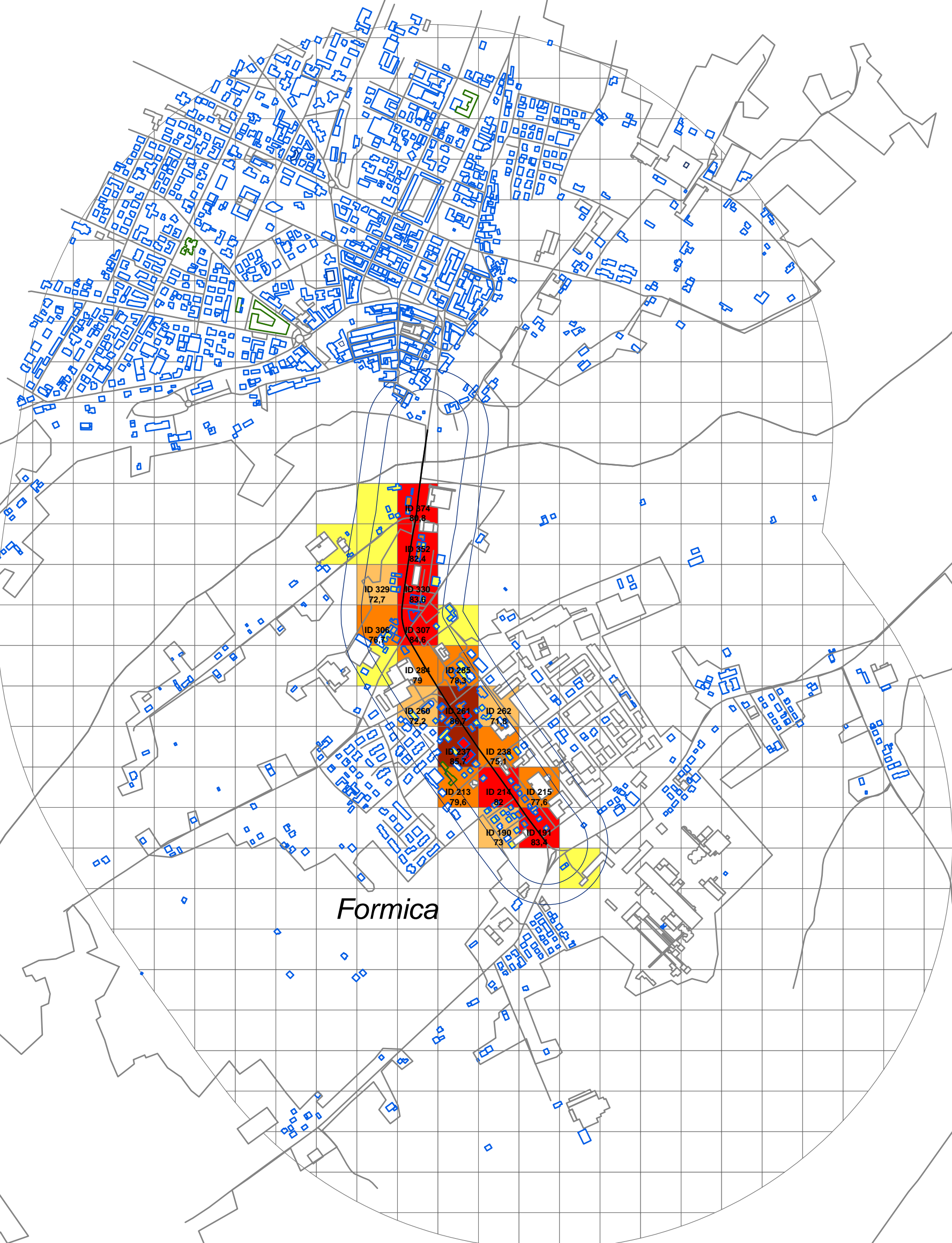
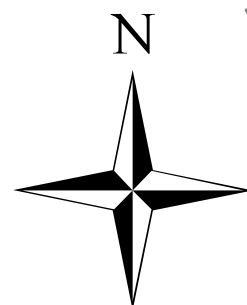
**SP569 - PA - ECUden di area**

**VIGNOLA**

**SAVIGNANO s/P**

*Formica*

1:10.000





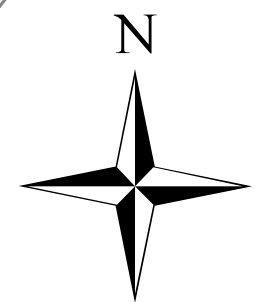
**SP569 - PA - Ecuden di sito**

**VIGNOLA**

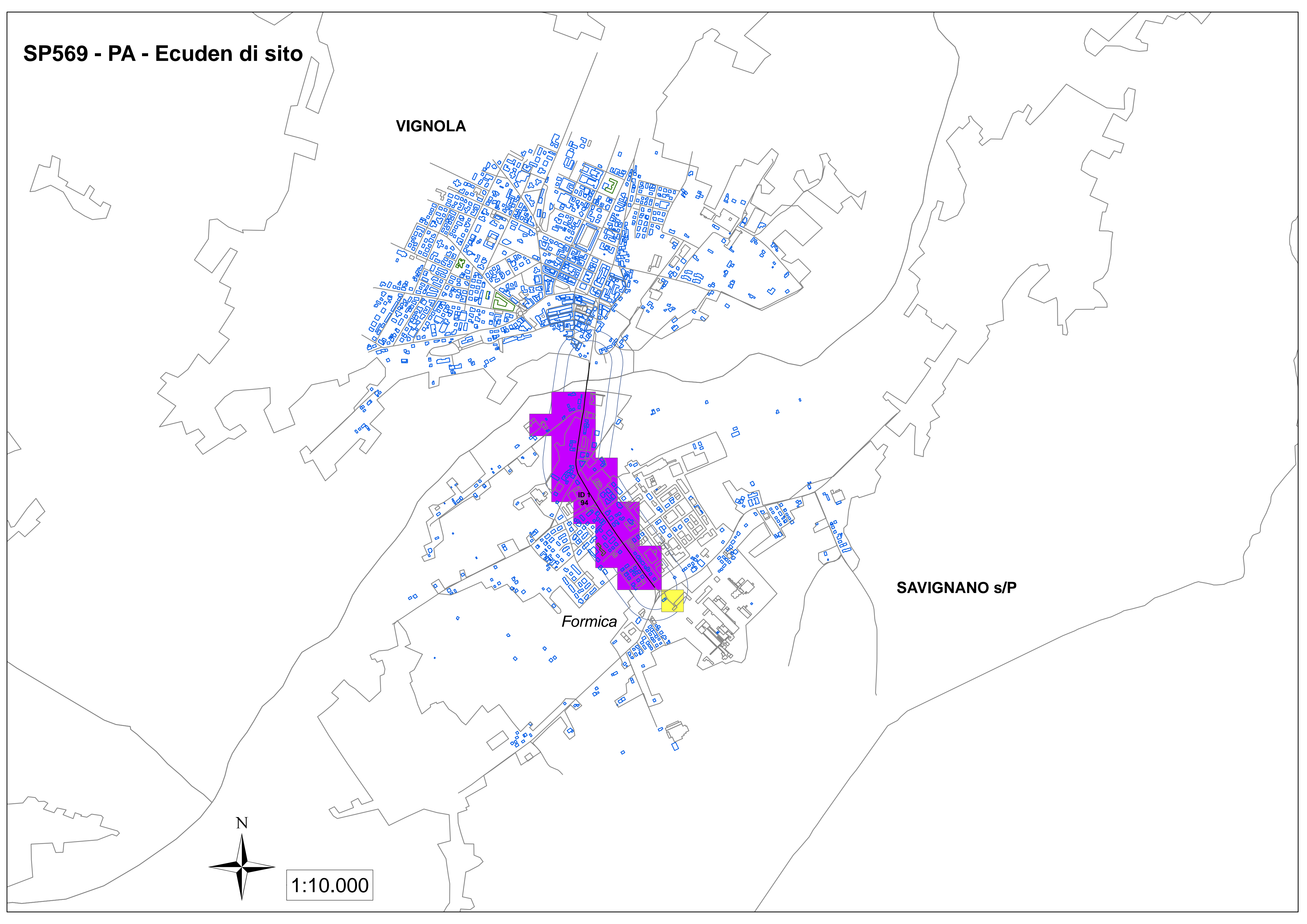
**SAVIGNANO s/P**

*Formica*

ID 94



1:10.000



SP569 - PA - LAeq,day

VIGNOLA

SAVIGNANO s/P

*Formica*

Scala 1:10000





SP569 - PA - LAeq,night

VIGNOLA

SAVIGNANO s/P

*Formica*

Scala 1:10000

