



PROVINCIA DI MODENA



AREA LAVORI PUBBLICI

Via Giardini, n° 470
41124 - MODENA



A cura di:



F.I.A. Futura Industria Ambientale s.n.c.
Via Lelio Rossi, 33 - 41012 - Carpi (MO)
Tel/Fax: 059/689551 - www.studiofia.it
email: info@studiofia.it
pec: studiofia@dapec.it

Oggetto:

PIANO D'AZIONE RELATIVO AGLI ASSI STRADALI PRINCIPALI
DI COMPETENZA PROVINCIALE (art. 4 D. Lgs. 194/05)

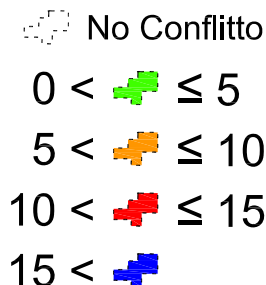
MAPPATURA ACUSTICA

Nome infrastruttura: SP623 del Passo Brasa - SP16 di Castelnuovo R.
Codice identificativo: IT_a_rd0053006 - IT_a_rd0053007
Coordinate - SP623 Start: X=10,9520 Y=44,6238; End: X=11,0228 Y=44,5057.
Coordinate - SP16 Start: X=11,0195 Y=44,5357; End: X=11,0365 Y=44,5333.

Progetto: AN403	Revisione: 1.0	Data: Giugno 2013	Arco Stradale: SP623
Scala: 1:10.000	Codice ditta: 2AD11pro	Disegnatore: MR	Versione: 1.0
Note:			SP16

LEGENDE

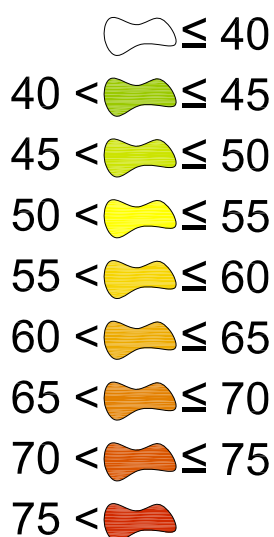
Conflitto in facciata edifici - dB(A)



Sigle

- MA** = Mappatura acustica
PA = Piano d'azione
L_{den} = Livello giorno-sera-notte, 24 ore
L_n = Livello notte, 22:00 - 06:00
LA_{eq,day} = Livello equivalente giorno, 06:00 - 22:00
LA_{eq,night} = Livello equivalente notte, 22:00 - 06:00
ECU_{den} = Indice criticità acustico

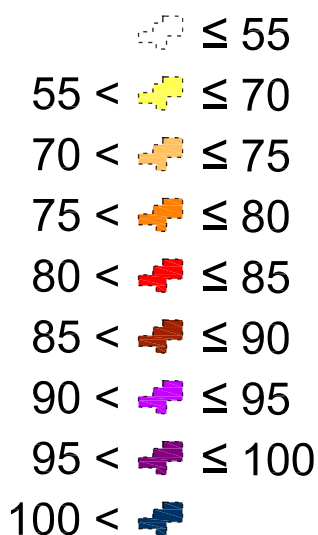
Mappe isolivello - dB(A)



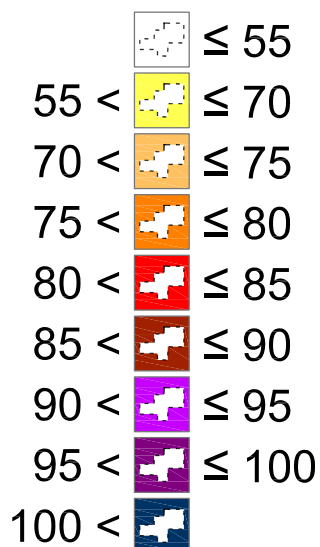
Infrastrutture/edifici:



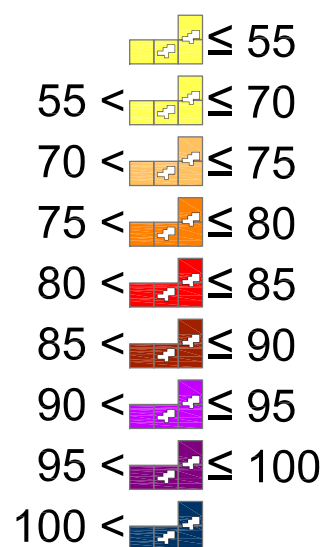
ECU_{den} di Edificio



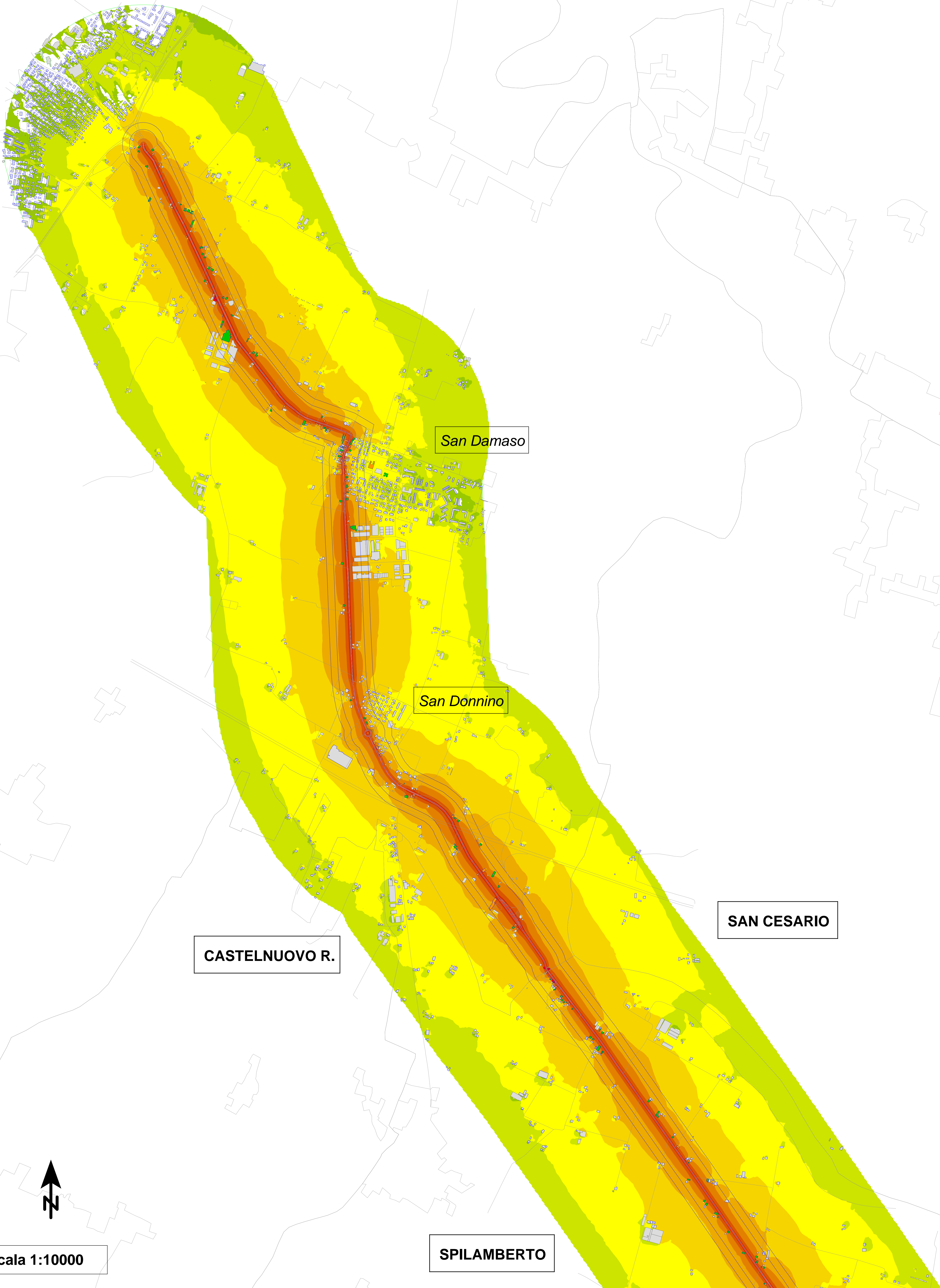
ECU_{den} di Area



ECU_{den} di Sito



MODENA



San Damaso

San Donnino

CASTELNUOVO R.

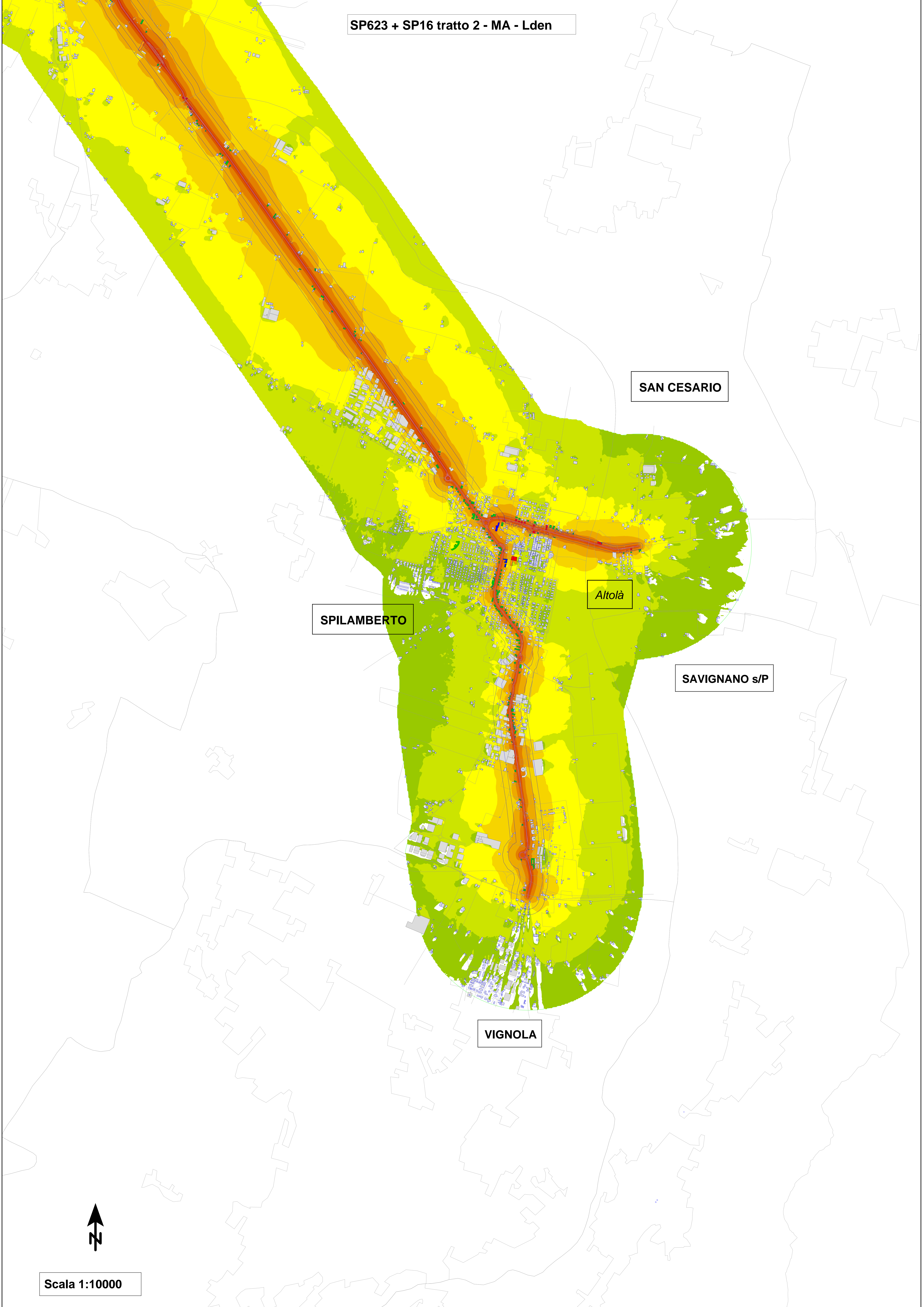
SAN CESARIO

SPILAMBERTO

Scala 1:10000



SP623 + SP16 tratto 2 - MA - Lden



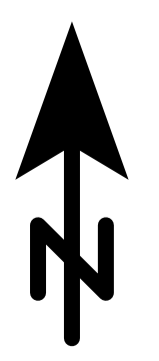
SAN CESARIO

SPILAMBERTO

Altolà

SAVIGNANO s/P

VIGNOLA



Scala 1:10000

MODENA

San Damaso

San Donnino

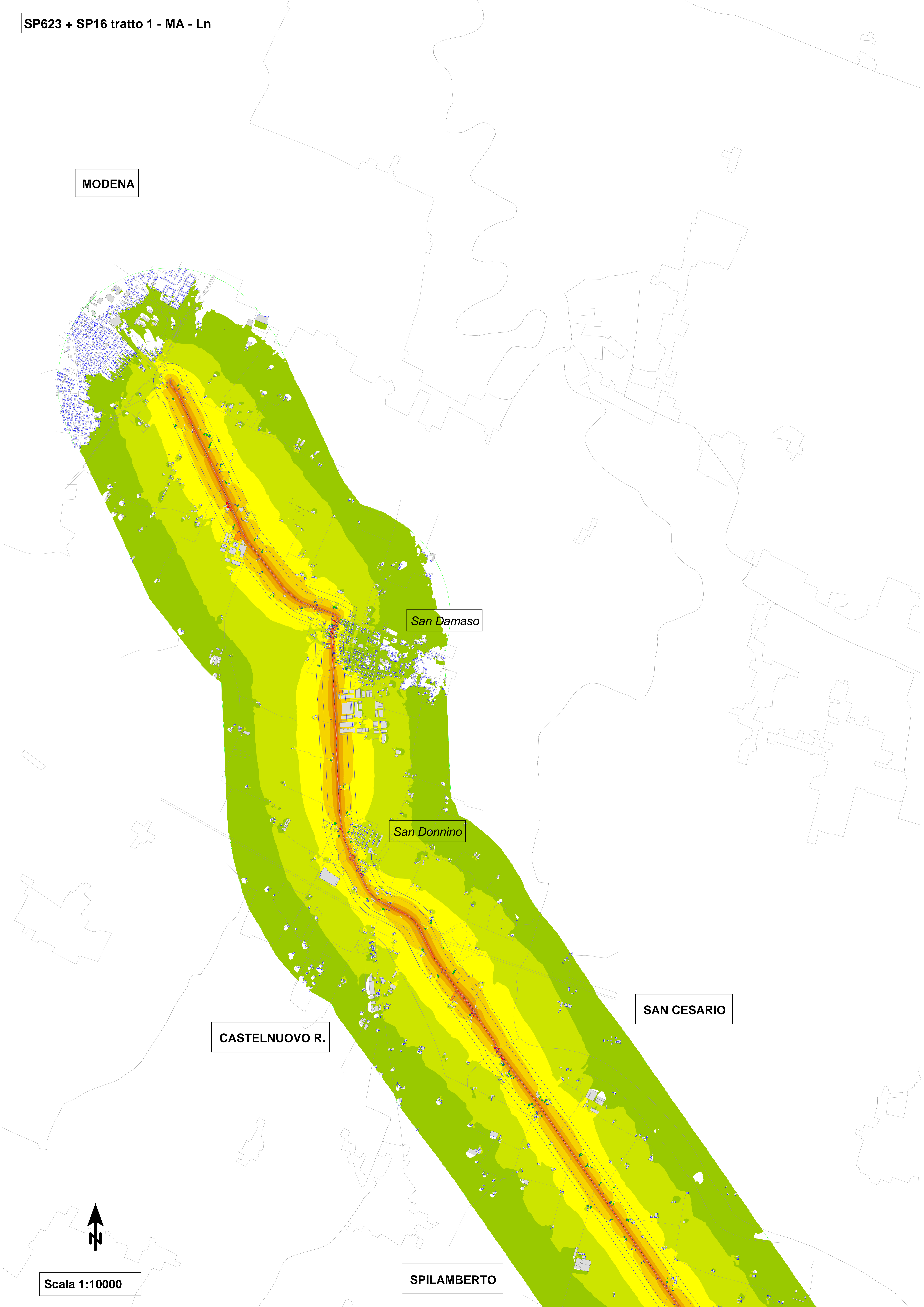
SAN CESARIO

CASTELNUOVO R.



Scala 1:10000

SPILAMBERTO



SP623 + SP16 tratto 2 - MA - Ln

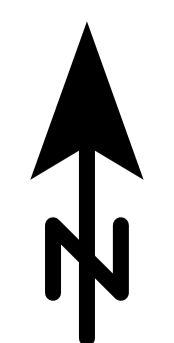
SAN CESARIO

Altola

SPILAMBERTO

SAVIGNANO s/P

VIGNOLA



Scala 1:10000

MODENA

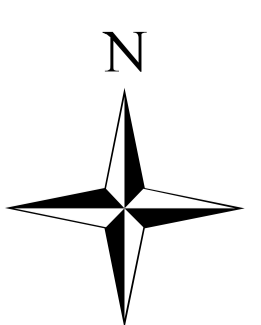
San Damaso

San Donnino

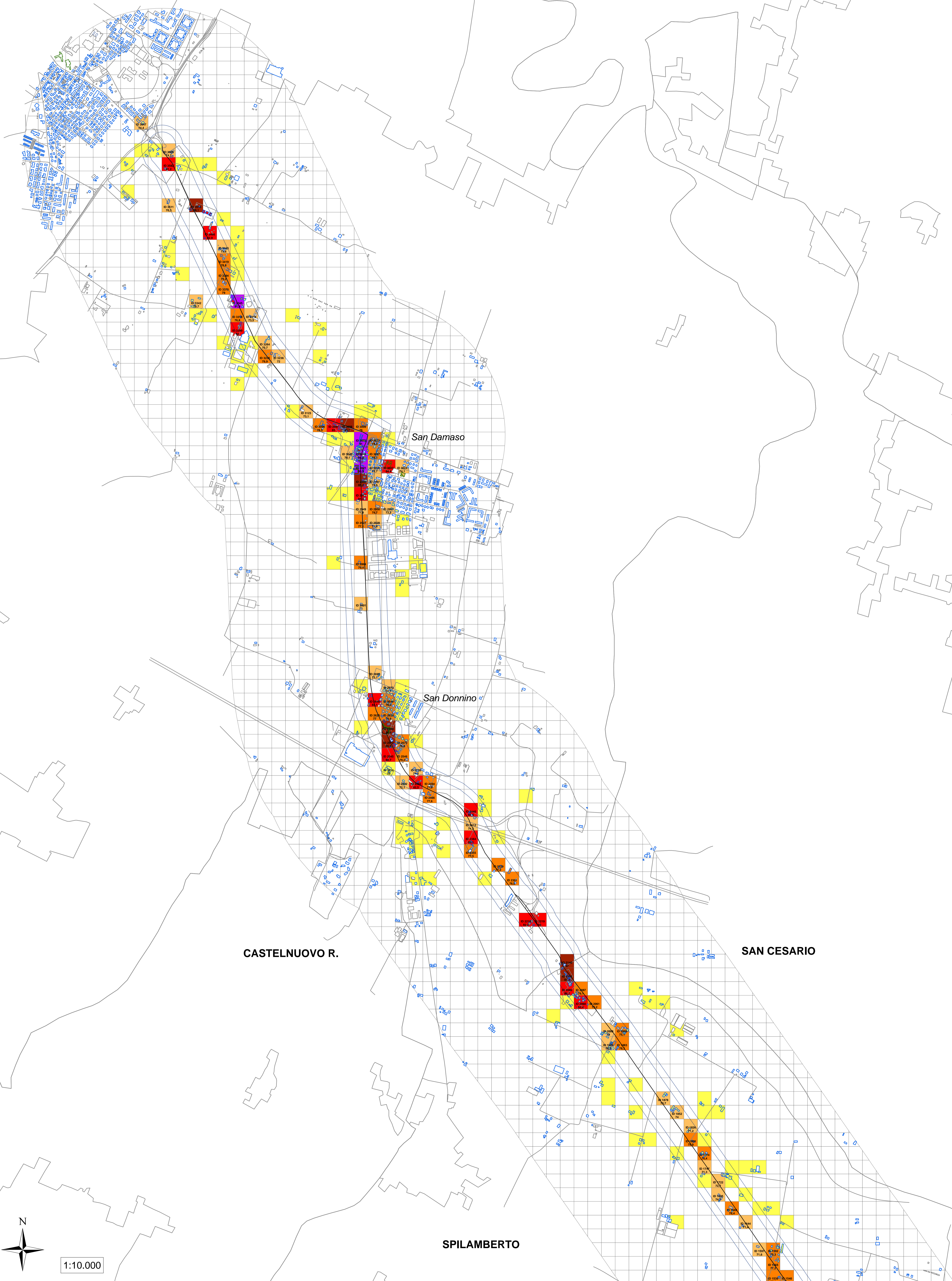
CASTELNUOVO R.

SAN CESARIO

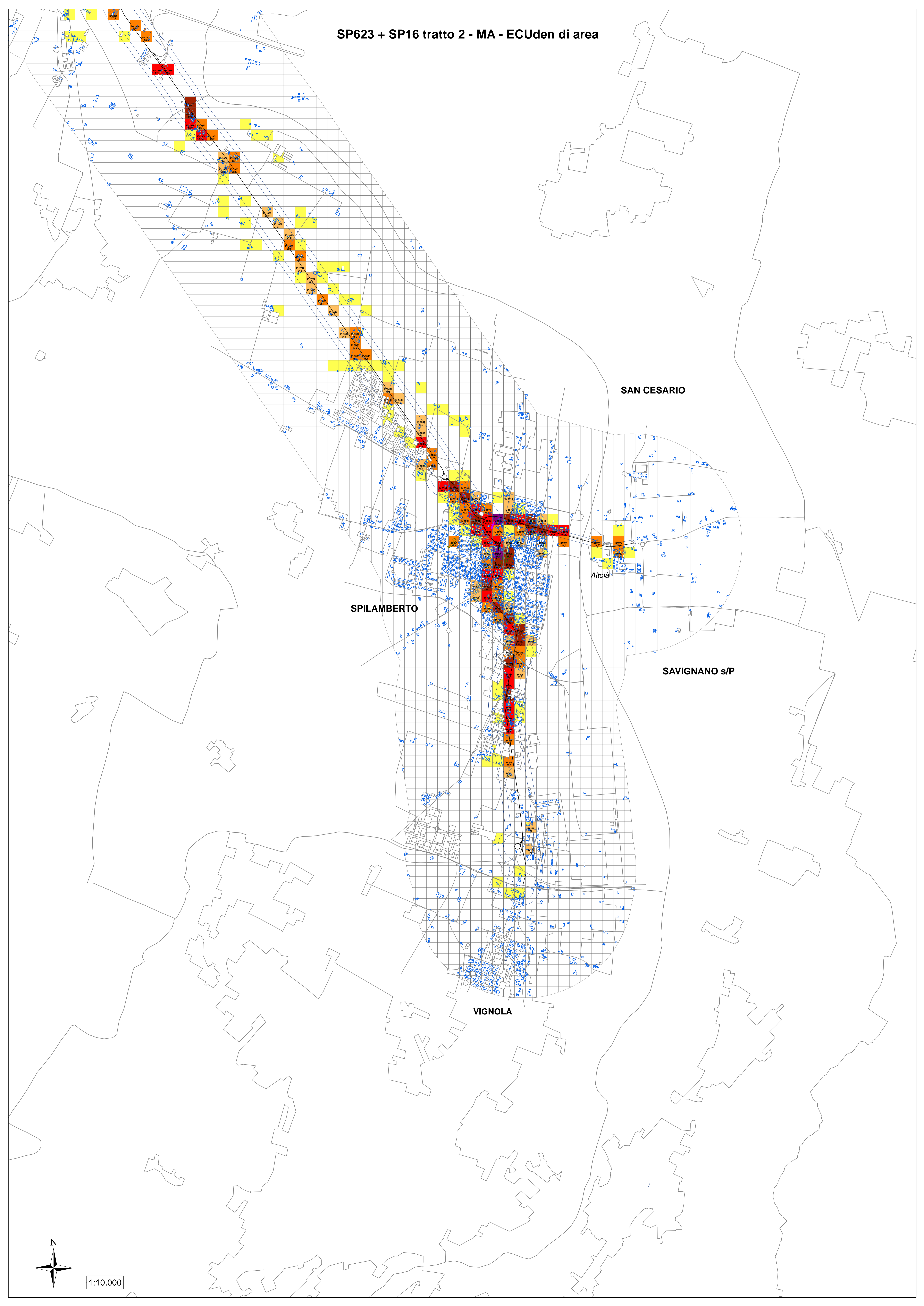
SPILAMBERTO



1:10.000



SP623 + SP16 tratto 2 - MA - ECUden di area



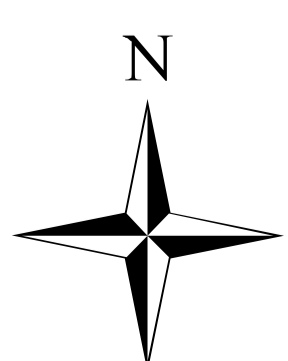
SAN CESARIO

SPILAMBERTO

SAVIGNANO s/P

VIGNOLA

Altola



1:10.000

MODENA

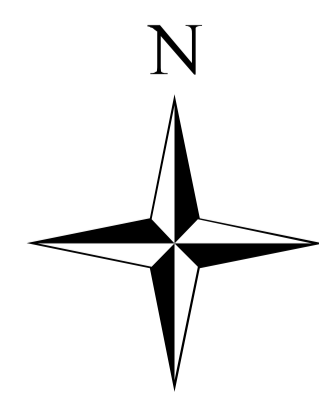
San Damaso

San Donnino

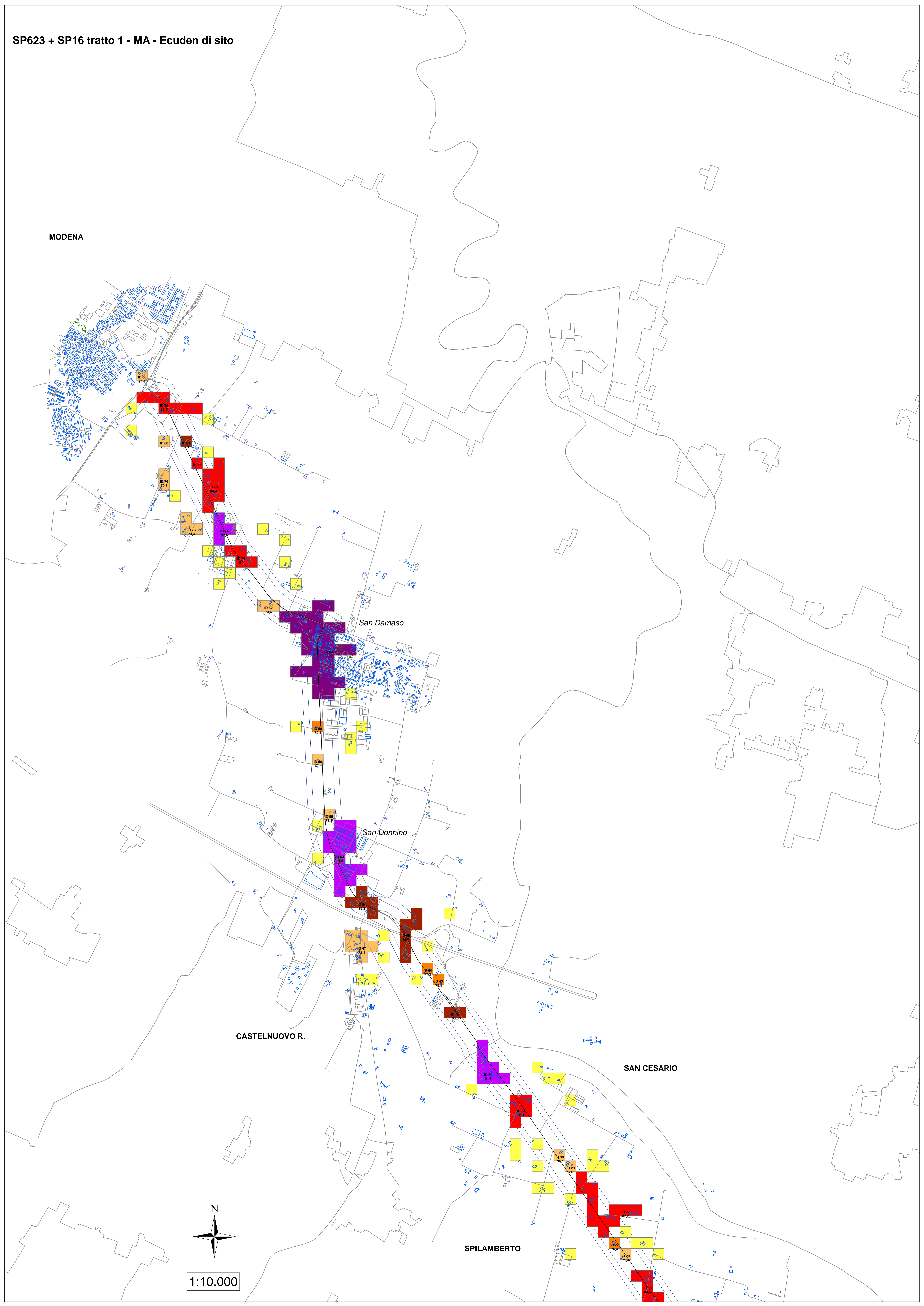
CASTELNUOVO R.

SAN CESARIO

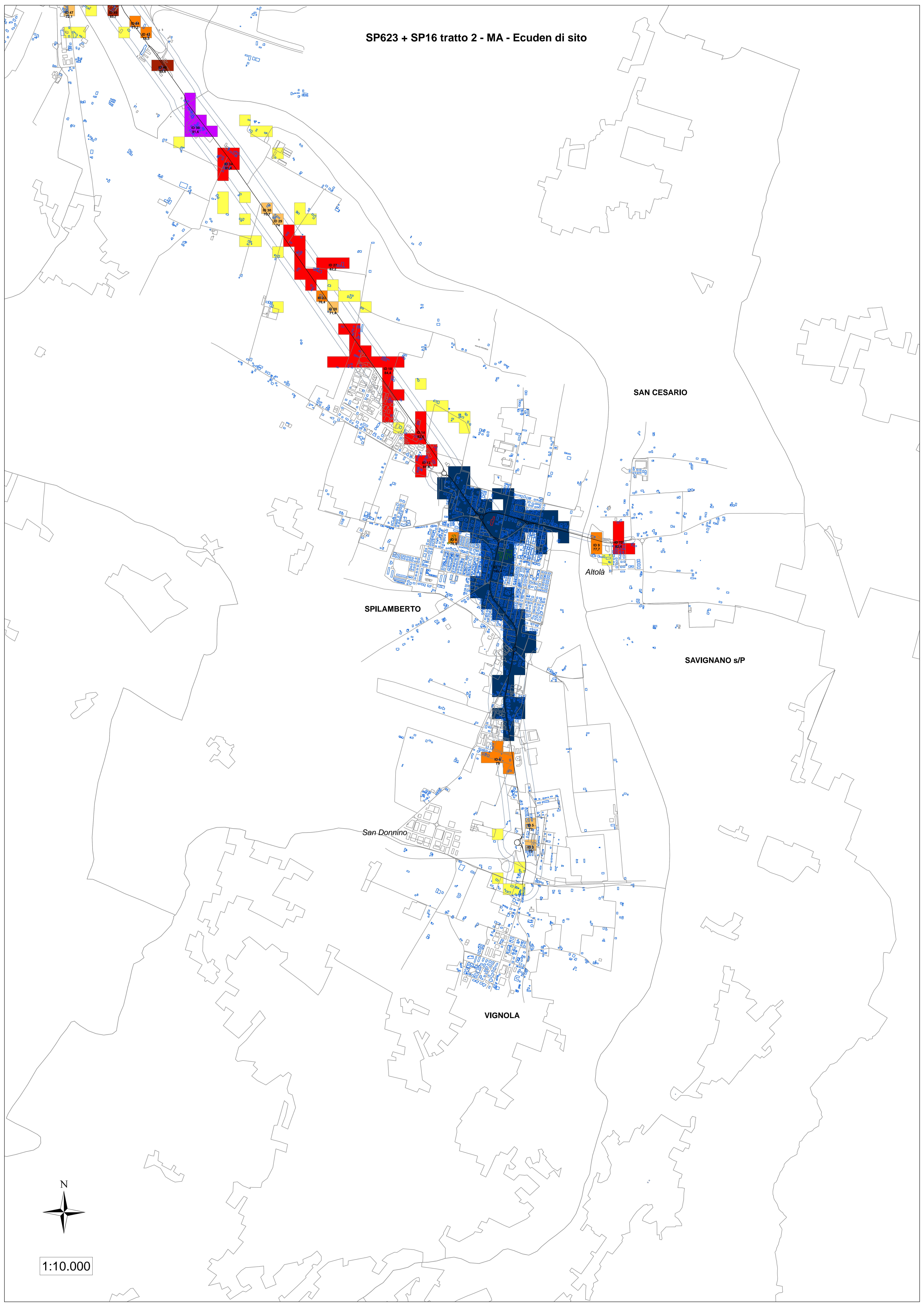
SPILAMBERTO



1:10.000



SP623 + SP16 tratto 2 - MA - Ecuden di sito



SAN CESARIO

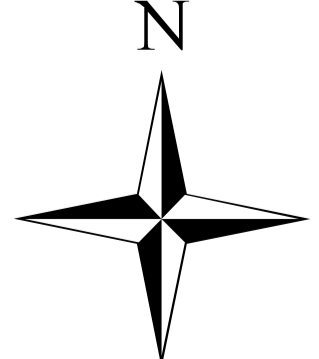
SPILAMBERTO

Altola

SAVIGNANO s/P

San Donino

VIGNOLA



1:10.000