



PROVINCIA DI MODENA



AREA LAVORI PUBBLICI

Via Giardini, n° 470
41124 - MODENA



A cura di:



F.I.A. Futura Industria Ambientale s.n.c.
Via Lelio Rossi, 33 - 41012 - Carpi (MO)
Tel/Fax: 059/689551 - www.studiofia.it
email: info@studiofia.it
pec: studiofia@dapec.it

Oggetto:

PIANO D'AZIONE RELATIVO AGLI ASSI STRADALI PRINCIPALI
DI COMPETENZA PROVINCIALE (art. 4 D. Lgs. 194/05)

PIANO D'AZIONE

Nome infrastruttura: SP467 di Scandiano Pedemontana

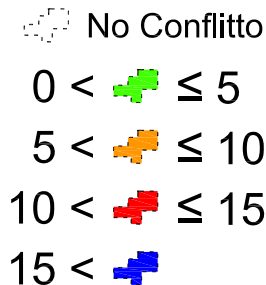
Codice identificativo: IT_a_rd0053004

Coordinate - Start: X=10,8165 Y=44,5520; End: X=10,8980 Y=44,5293.

Progetto: AN403	Revisione: 1.0	Data: Giugno 2013	Arco Stradale: SP467
Scala: 1:10.000	Codice ditta: 2AD11pro	Disegnatore: MR	Versione: 1.0
Note:			

LEGENDE

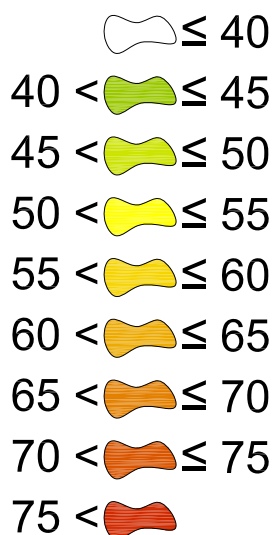
Conflitto in facciata edifici - dB(A)



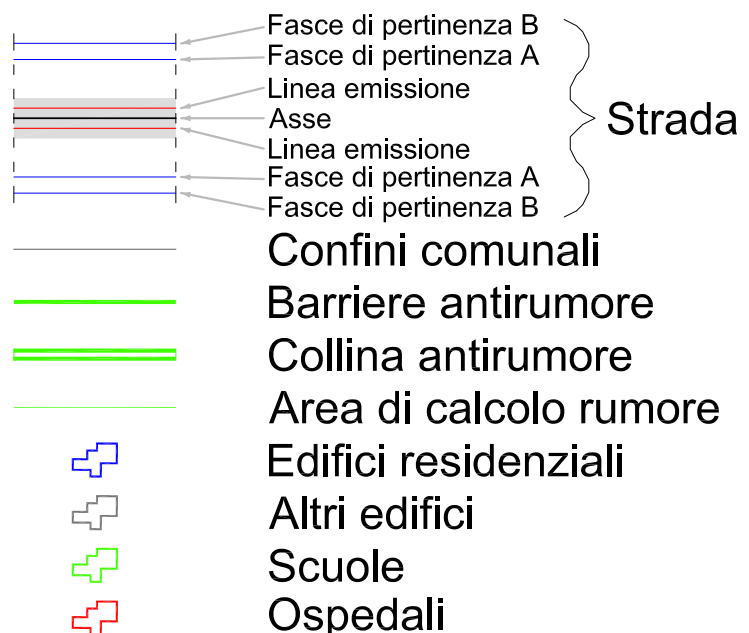
Sigle

MA	= Mappatura acustica
PA	= Piano d'azione
L_{den}	= Livello giorno-sera-notte, 24 ore
L_n	= Livello notte, 22:00 - 06:00
LA_{eq,day}	= Livello equivalente giorno, 06:00 - 22:00
LA_{eq,night}	= Livello equivalente notte, 22:00 - 06:00
ECU_{den}	= Indice criticità acustico

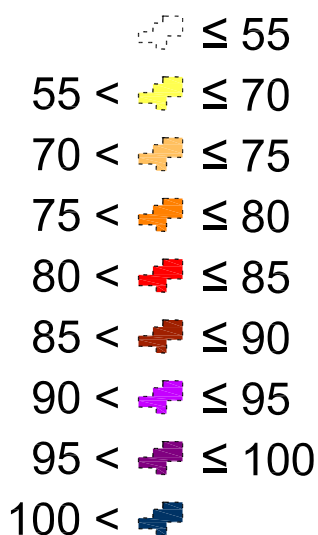
Mappe isolivello - dB(A)



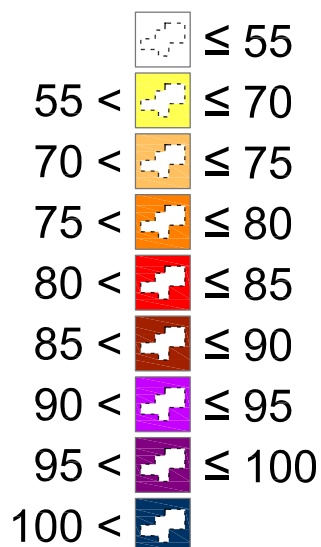
Infrastrutture/edifici:



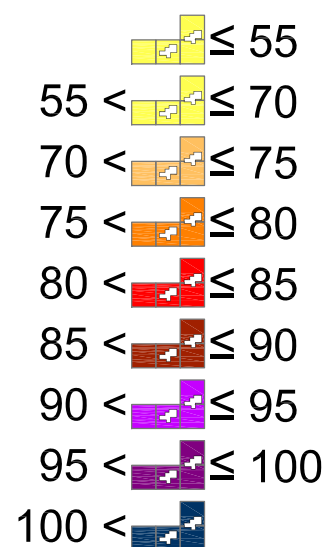
ECU_{den} di Edificio



ECU_{den} di Area



ECU_{den} di Sito



SP467 Fiorano Maranello - PA - Lden

FORMIGINE

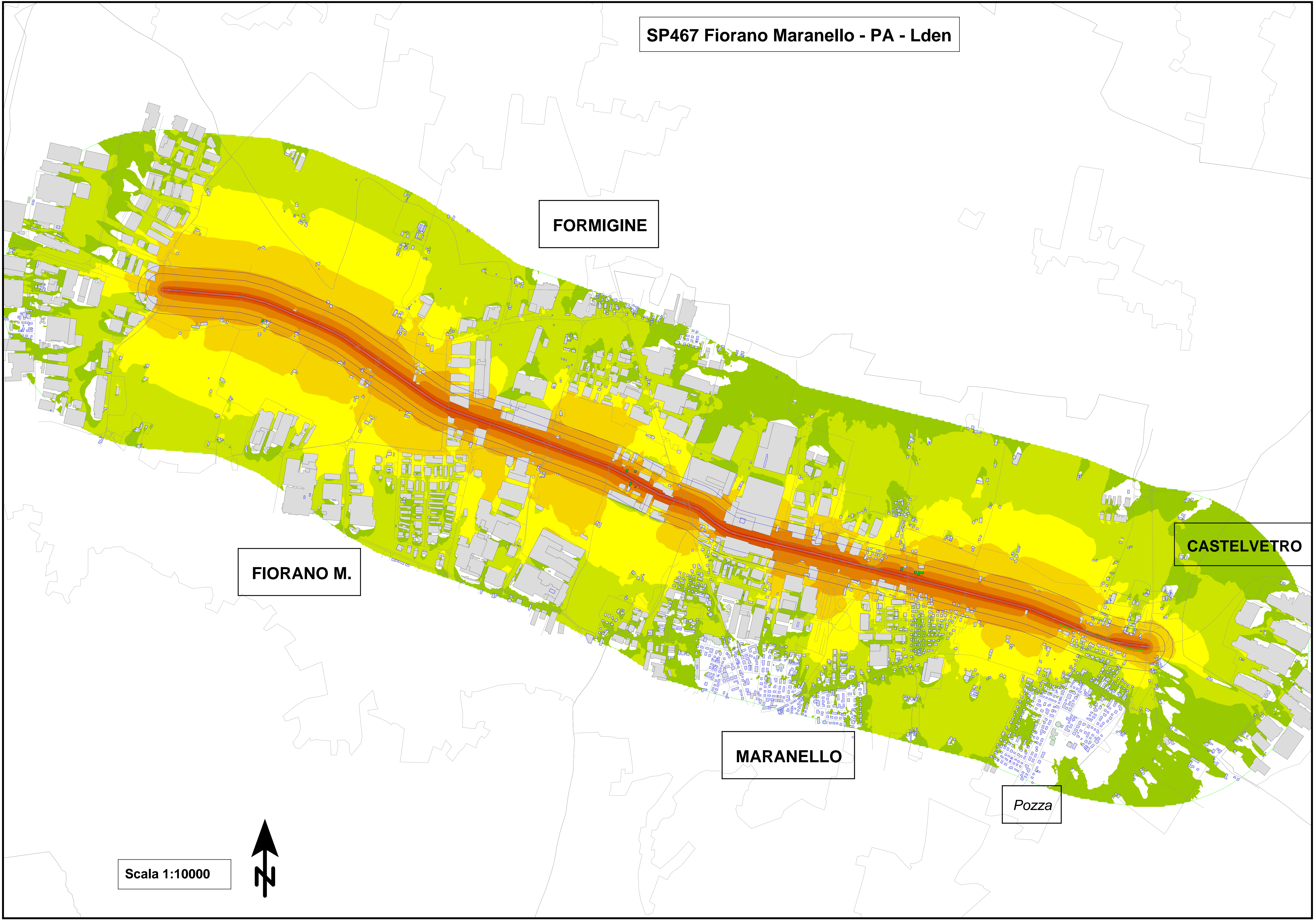
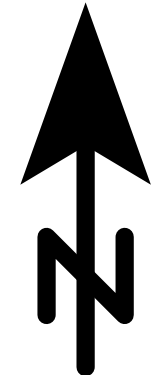
FIORANO M.

CASTELVETRO

MARANELLO

Pozza

Scala 1:10000



SP467 Fiorano Maranello - PA - Ln

FORMIGINE

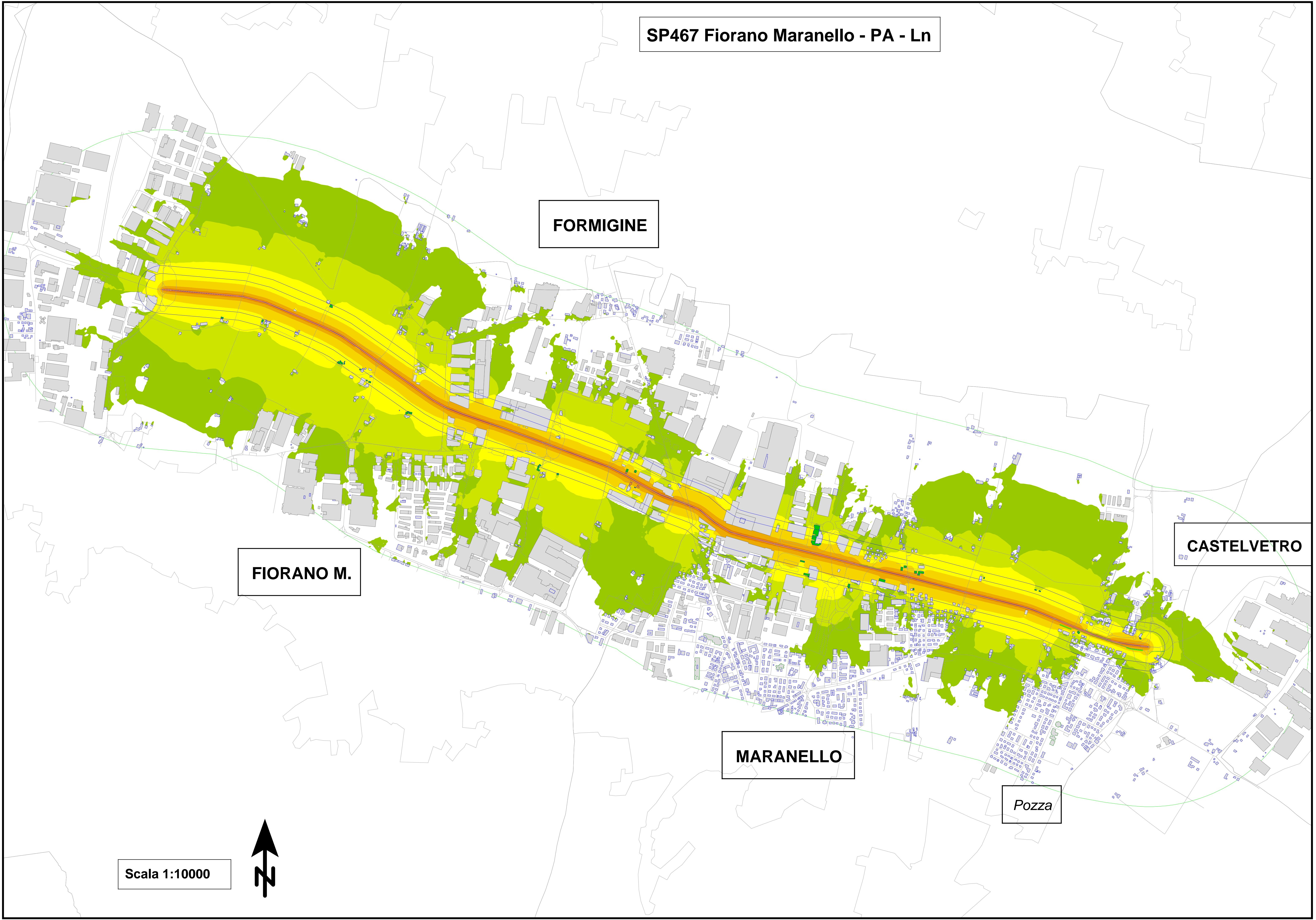
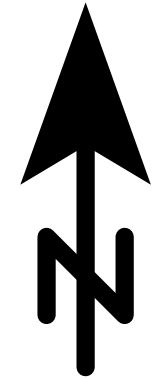
FIORANO M.

CASTELVETRO

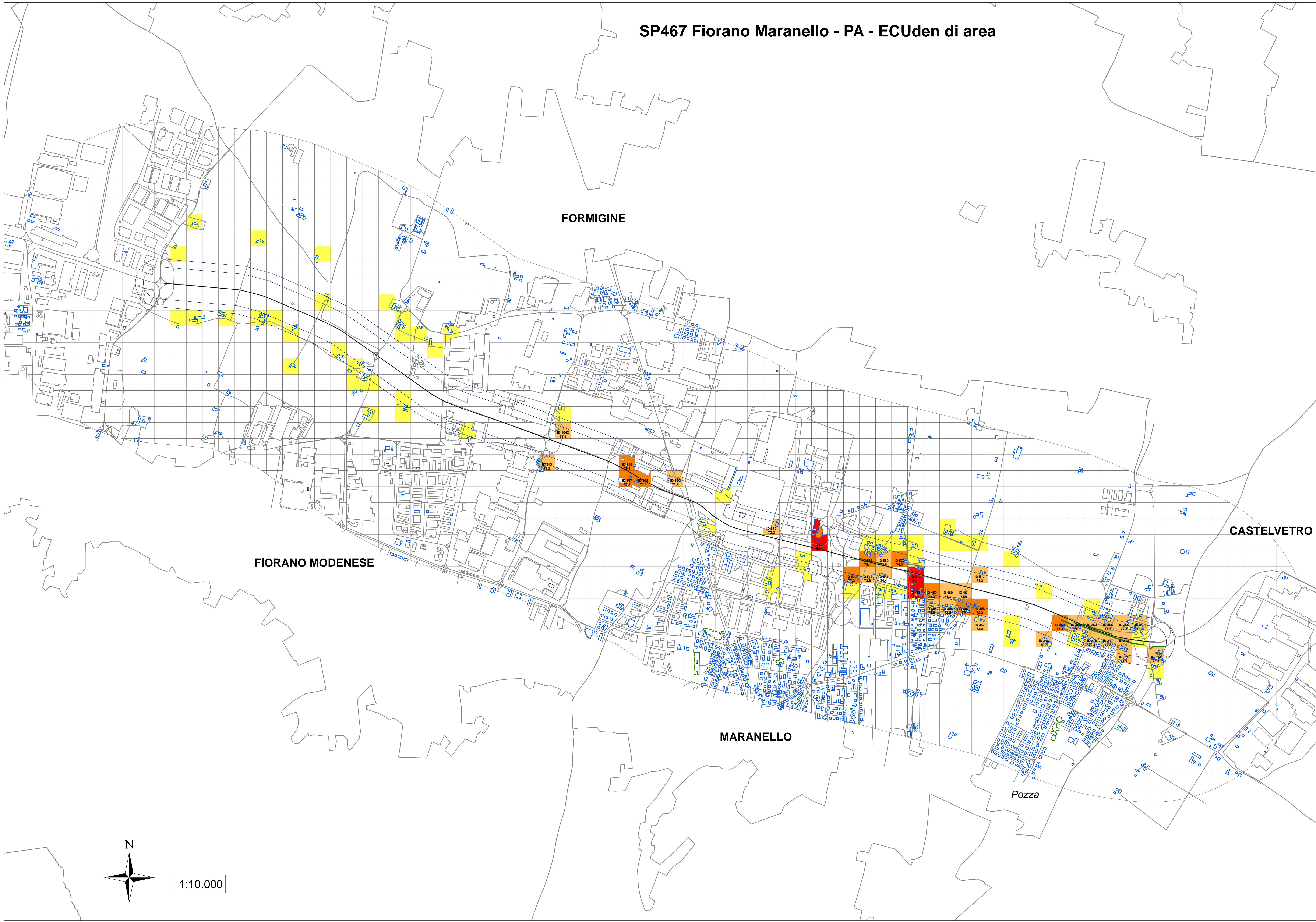
MARANELLO

Pozza

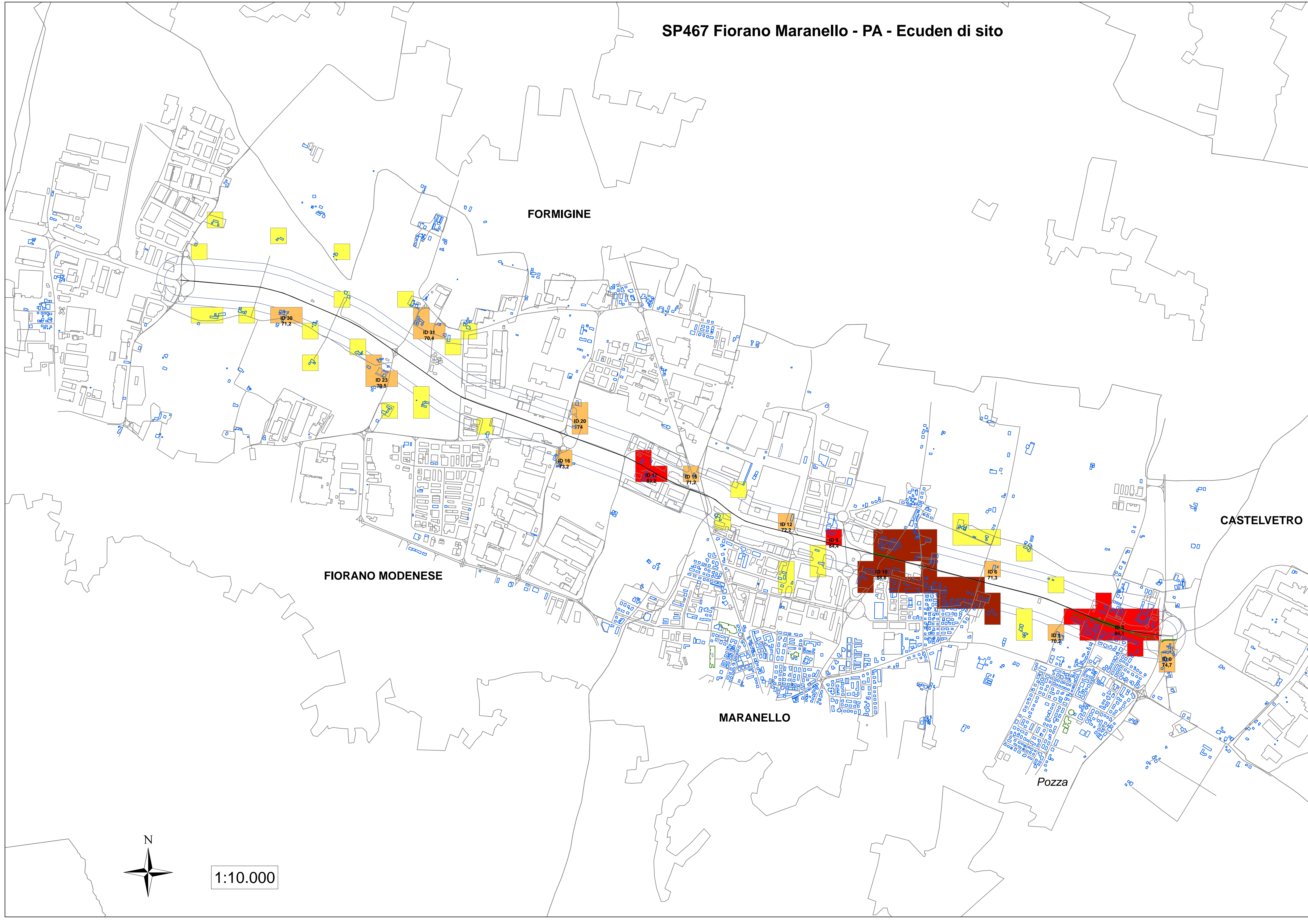
Scala 1:10000



SP467 Fiorano Maranello - PA - ECUden di area



SP467 Fiorano Maranello - PA - Ecuden di sito



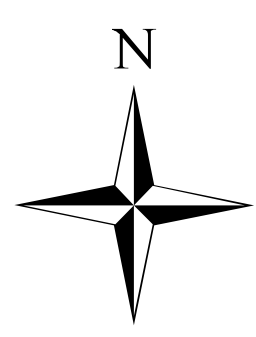
FORMIGINE

FIORANO MODENESE

MARANELLO

CASTELVETRO

Pozza



1:10.000

SP467 Fiorano Maranello - PA - LAeq,day

FORMIGINE

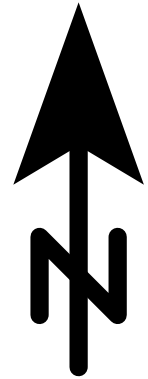
FIORANO M.

CASTELVETRO

MARANELLO

Pozza

Scala 1:10000



SP467 Fiorano Maranello - PA - LAeq,night

FORMIGINE

FIORANO M.

CASTELVETRO

MARANELLO

Pozza

Scala 1:10000

